



ASPIRE

— TO MOVE —



Sladebrook Road, Bath, BA2

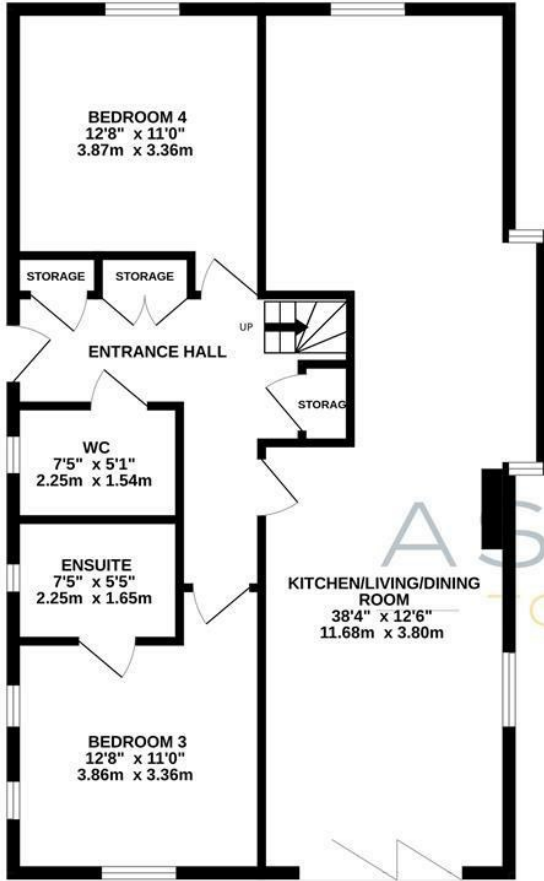
The house is particularly well situated on this popular residential road on the western side of Bath, with a range of local amenities available nearby on Mount Road and in Oldfield Park, including convenience stores, cafés and other everyday facilities. The thriving Moorland Road shopping parade and Oldfield Park railway station are both within easy reach, while Bath city centre lies approximately two miles away. The location is also well placed for a number of well-regarded local schools including Hayesfield Girls' School and Beechen Cliff School, together with excellent public transport links and regular bus services into the city centre. In addition, the property offers convenient access to the A4 and M4 without the need to travel through the centre of Bath.

£2,300 PCM

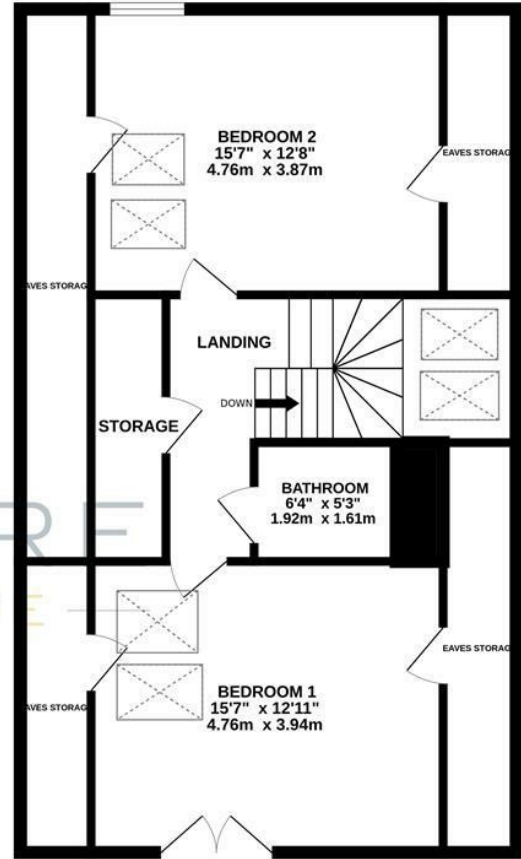
- 4 bedroom house
- Modern design
- Available June 2026
- Council tax band E
- Fantastic views
- White goods included
- Driveway parking
- 12 month periodic tenancy
- Holding deposit - £530.00 - one weeks worth of rent

Floor Plans

GROUND FLOOR
855 sq.ft. (79.5 sq.m.) approx.



1ST FLOOR
813 sq.ft. (75.5 sq.m.) approx.

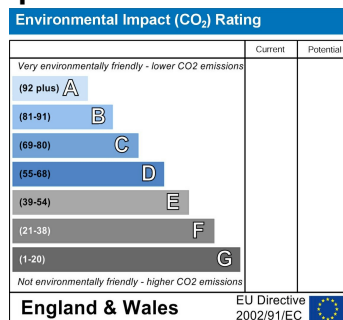
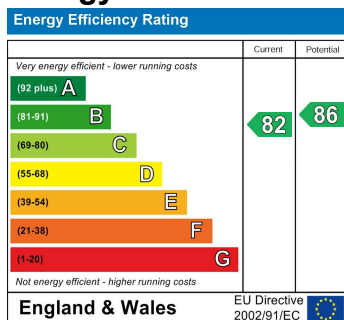


SLADEBROOK ROAD, BATH, BA2

TOTAL FLOOR AREA : 1668 sq.ft. (155.0 sq.m.) approx.

Whilst every attempt has been made to ensure the accuracy of the floorplan contained here, measurements of doors, windows, rooms and any other items are approximate and no responsibility is taken for any error, omission or mis-statement. This plan is for illustrative purposes only and should be used as such by any prospective purchaser. The services, systems and appliances shown have not been tested and no guarantee as to their operability or efficiency can be given.
Made with Metropix ©2025

Energy Performance Graph



These particulars, whilst believed to be accurate are set out as a general outline only for guidance and do not constitute any part of an offer or contract. Intending purchasers should not rely on them as statements of representation of fact, but must satisfy themselves by inspection or otherwise as to their accuracy. No person in this firm's employment has the authority to make or give any representation or warranty in respect of the property.